

# OVERVIEW

## ESCORTED PACKAGE

### Included:

- ✓ Accommodations as listed
- ✓ Gratuities/tips
- ✓ Exercise Fitness/Pool where available
- ✓ Wi-Fi and/or Internet where available
- ✓ Meals as listed
- ✓ Standard drinks as offered
- ✓ Air-conditioned motorcoach
- ✓ Entertainment/Activities as programmed
- ✓ ASL interpreter(s)
- ✓ Tour Guide/Host from Deaf Globetrotters

### Excluded:

- ✓ Domestic and/or international airfares
- ✓ Pre-Tour or Post-Tour accommodations
- ✓ Passports/Visas
- ✓ Travel insurance

## ROUTES



## HIGHLIGHTS

### Havana



**Cuba Art Factory**



**National Capital**



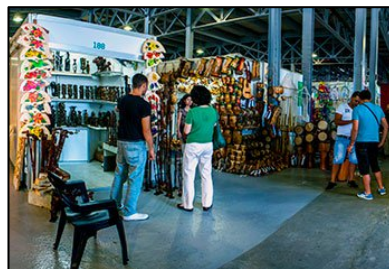
**Paseo Del Prado**



**Floridita**



**Havana Club's  
Rum Museum**



**Handicraft Market**



**Revolution Square**



**Colon Cemetery**



**Waterfront Boulevard**



**American Embassy**



**Fusterlandia**



**Callejon de Hamel**



## Havana



**National Deaf Center**



**El Morro Fort**



**El Cristo de La Habana**



**El Cañonazo**



**Finca Vigia**  
(Ernest Hemingway's Estate)



**Cigar Factory**



**Tropicana Club**

## Viñales



**Los Jazmines**



**Cigar Plantation**



**Cigar Shed**

## **Viñales**



**Prehistoric Mural**



**Indian Cave**

## **Bay of Pigs**



**Bay of Pigs Museum**



**Military Tank**



**Bay of Pigs Beach**

## **Cienfuegos**



**Tomas Terry Theatre**



**Cathedral**



**Palacio de Valle**



**José Martí Square**



## Trinidad



**Plaza Mayor**



**Romance Museum**



**Architecture Museum**



**La Canchanchara**



**Sugar Mills Valley**



**Iznaga Tower**

## Santa Clara



**Che Guevara Mausoleum**



**Tren Blindado National Monument**

## Varadero



**Beach**



**Seaview**

### **IS THIS TRIP RIGHT FOR YOU?**

**This moderately active program covers a good amount of ground each day. Expect from two to three hours walking every touring day. The pace is moderate, and you will encounter some uneven or wet surfaces.**

### **CANCELLATION POLICY**

<b>Duration</b>	<b>Cancellation Charges</b>
<b>90 days &amp; before arrival</b>	<b>\$250 non-refundable deposit</b>
<b>89-60 days before arrival</b>	<b>25% of tour/service cost</b>
<b>59-40 days before arrival</b>	<b>50% of tour/service cost</b>
<b>39-20 days before arrival</b>	<b>75% of tour/service cost</b>
<b>19 days or less</b>	<b>100% of tour/service cost</b>