

# CREATION MUSEUM EXHIBITS



## Garden of Eden

Explore the idyllic Garden of Eden alongside Adam and Eve. You'll see Adam naming the animals, the creation of Eve, the tree of life, and the serpent cunningly coiled in the Tree of the Knowledge of Good and Evil.

## Lucy the Ape

Lucy is a famous evolutionary icon. Is she best understood as a human ancestor or an extinct ape? Holograms and life-like sculpturing help to answer this question.



## Dr. Crawley's Insectarium

They're creepy and crawly, and they're on display at the Creation Museum. See exotic butterflies, colorful beetles, giant stick insects, and more as you discover the fascinating design of bugs.

## Dragon Legends

Legends of fearsome beasts called dragons are found in cultures around the world. Where did these legends come from, and could there be some truth behind the tales?



## Noah's Ark

What did Noah's Ark look like, how was it built, and how did Noah care for the animals during the yearlong voyage? Get answers as you explore just one percent of the massive Ark.

## Dinosaur Den

Nothing fascinates both kids and adults quite like dinosaurs. You'll see dinosaur sculptures of all kinds and learn about their incredible design in Buddy Davis' Dinosaur Den.



# CREATION MUSEUM EXHIBITS

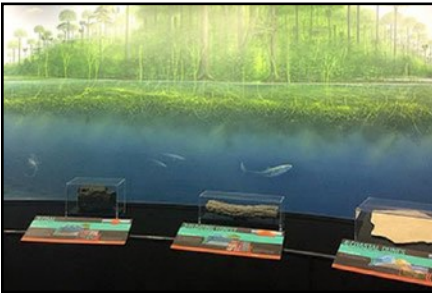


## Natural Selection

Natural selection is the name Charles Darwin gave to an observable process, which results in small changes in the plant and animal world, such as fur color or plant height. Darwin believed that given enough time, this process could be the primary mechanism of unobservable molecules-to-man evolution—but can it?

## Museum of the Bible

Museum of the Bible presents “Dragon Slayers,” an exhibit examining three dragon slayers, who appear in a medieval book of hours in the museum collections.



## The Flood

During the year of the Flood, the ocean waters picked up plants and animals on the land and buried them in sequences of mud and sand layers where they became fossils. The Flood left behind layer upon layer of rocks and fossils in the present, spread right across continents.